

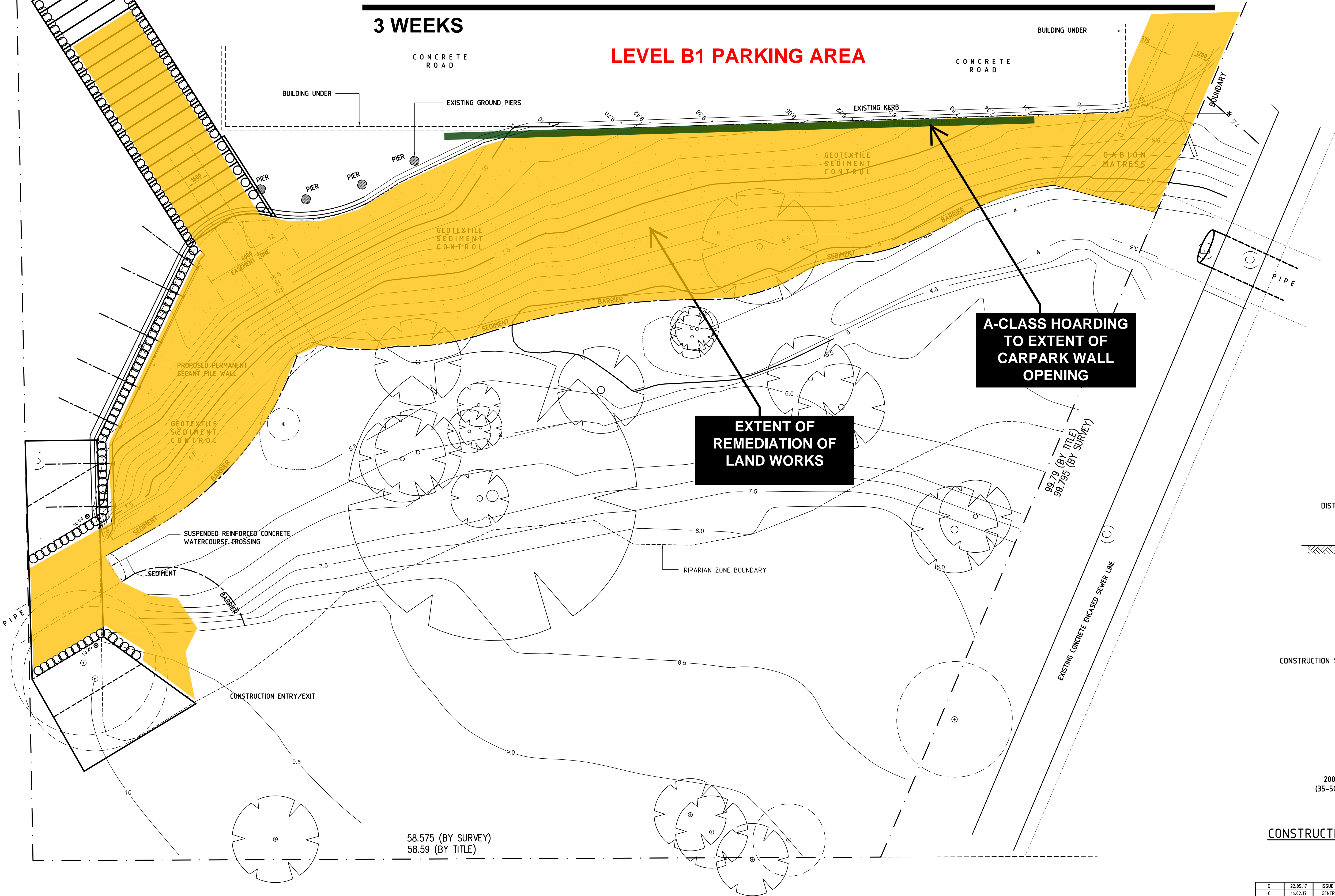
WOOLWORTHS
LOADING DOCK



84D ROBERTS AVE, MORTDALE - WEST PHASE 2_REMEDIATION OF LAND WORKS

3 WEEKS

LEVEL B1 PARKING AREA



GENERAL NOTES

1. DEVELOPMENT APPROVAL
THESE DRAWINGS SHALL BE READ IN CONJUNCTION WITH THE DEVELOPMENT APPROVAL, CONSTRUCTION CERTIFICATE AND ANY SCHEDULES ATTACHED THERETO. ALL CONDITIONS MUST BE APPLIED TO THE DEVELOPMENT, WHERE ANY VARIATIONS ARE SOUGHT, IT IS THE RESPONSIBILITY OF THE DEVELOPER TO CONTACT COUNCIL TO OBTAIN APPROVAL FOR ANY SUCH VARIATIONS.

2. ENGINEERING DRAWINGS AND OTHER CONSULTANTS
THESE DRAWINGS SHALL BE READ AS A SET AND IN CONJUNCTION WITH ALL SPECIFICATIONS, ENGINEERING PLANS AND CONSULTANTS PLANS AS SUPPLIED BY THE DEVELOPER. THESE PLANS AND SPECIFICATIONS MAY INCLUDE BUT ARE NOT LIMITED TO STRUCTURAL PLANS, STORMWATER PLANS, ASBESTOS MANAGEMENT PLAN ETC. FINAL COORDINATION OF PLANS BY BUILDER.

SOIL AND WATER MANAGEMENT NOTES

01. ALL EROSION AND SEDIMENT CONTROL MEASURES TO BE INSPECTED AND MAINTAINED DAILY BY SITE MANAGER

02. MINIMISE DISTURBED AREAS

03. ROADS AND FOOTPATHS TO BE SWEEPED DAILY AND KEPT CLEAN AT ALL TIMES

04. INSTALL TEMPORARY SEDIMENT BARRIERS TO ALL INLET PITS LIKELY TO COLLECT SILT LADEN WATER, TO COUNCIL'S REQUIREMENTS.

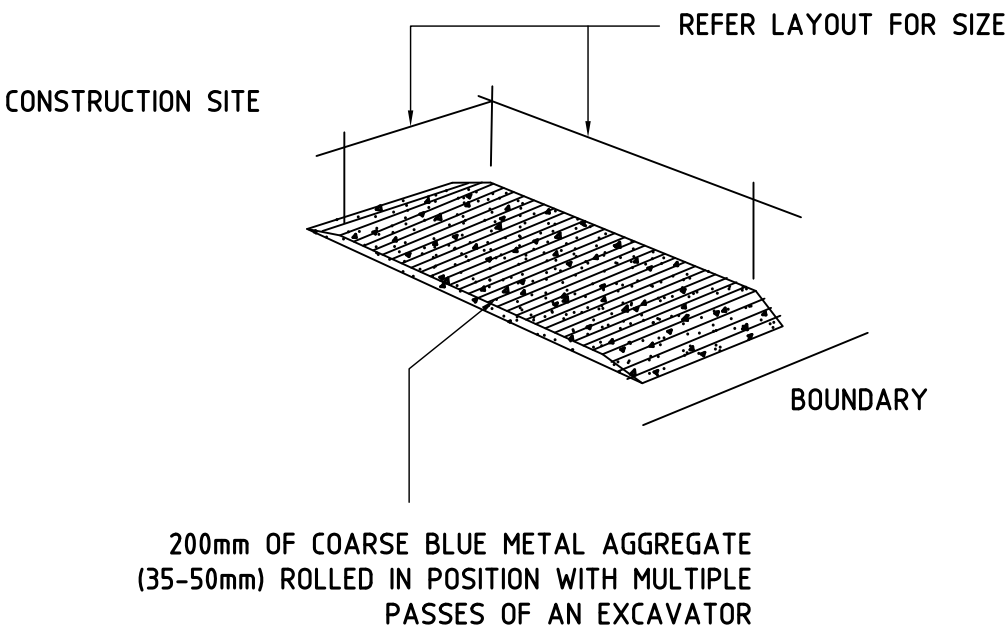
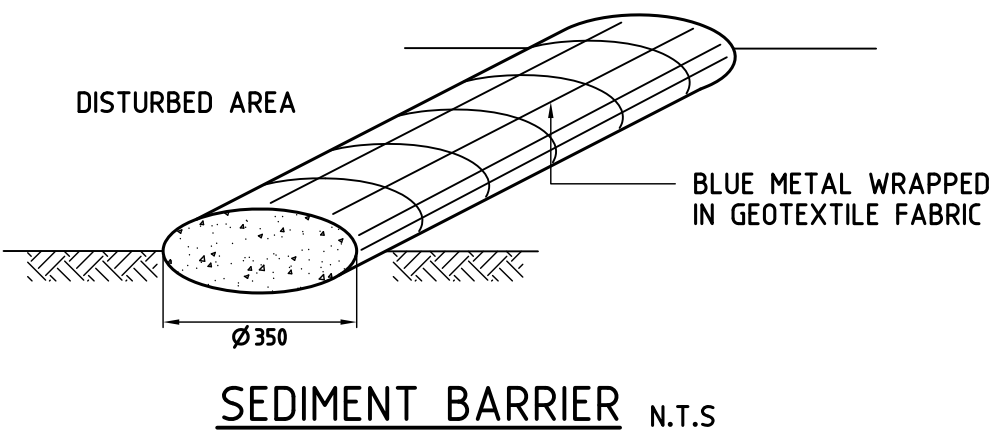
05. NOT WITHSTANDING DETAILS SHOWN, IT IS THE SITE MANAGERS SOLE RESPONSIBILITY TO ENSURE THAT ALL SITE ACTIVITIES COMPLY WITH THE REQUIREMENTS OF THE CLEAN WATERS ACT.

06. ALL BARE SOIL AREAS ARE TO BE PROTECTED FROM EROSION BY TEMPORARY MEASURES AND REVEGETATED AT THE CESSATION OF CONSTRUCTION.

07. THE DOWNHILL BOUNDARY OF THE SITE IS TO BE PROTECTED BY HAY BALES OR A FILTER FABRIC FENCE DURING CONSTRUCTION AS SHOWN IN THE ATTACHED DETAILS.

08. A SINGLE CONSTRUCTION ENTRANCE SHALL BE ESTABLISHED IN THE MANNER SHOWN IN THE ATTACHED DETAILS.

09. THIS DRAWING SHALL BE READ IN CONJUNCTION WITH STRUCTURAL ENGINEERING DOCUMENTS & ASBESTOS MANAGEMENT PLAN. ANY DISCREPANCIES SHALL BE REPORTED BY THE SITE MANAGER TO THE DESIGNER PRIOR TO COMMENCEMENT OF THE ITEM.

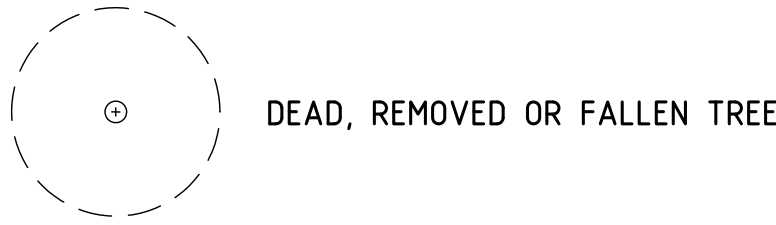


CONSTRUCTION ENTRY/EXIT DETAIL N.T.S.

EROSION & SEDIMENT CONTROL PLAN

1:100 @ A0

LEGEND



D	22.05.17	ISSUE FOR CONSTRUCTION	D.J.R
C	16.02.17	GENERAL REVISION	D.J.R
B	26.04.16	GENERAL REVISION	D.J.R
A	22.04.16	ISSUED FOR APPROVAL	D.J.R
REV.	DATE	AMENDMENT DESCRIPTION	DRAWN
JOHN ROMANOUS & ASSOCIATES PTY. LTD. CONSULTING STRUCTURAL ENGINEERS ABN 98 054 595 005 LEVEL 7, 10 PARK RD, HURSTVILLE NSW 2220 Ph 02 9580 8552 Web www.jra.net.au			
RETAIL DEVELOPMENT AT 84D ROBERTS AVENUE, MORTDALE FOR ROMANOUS CONSTRUCTION PTY. LTD.			
EROSION & SEDIMENT CONTROL PLAN			
DRAWN	ENGINEER	CHECKED	SCALE
D.J.R	JMR	A.ROMANOUS S.E. M.L.AUST.	1:100 A0
DRAWING No.		REV.	
6000-R06		D	

SITE / ROOF LAYOUT
scale 1:300

